

Hampshire Water Transfer and Water Recycling Project Environmental Statement – Figure 19.7 Bedrock aquifer designations

VOLUME NUMBER: 6

PLANNING INSPECTORATE SCHEME NUMBER: WA010002

APPLICATION DOCUMENT REFERENCE: 6.3

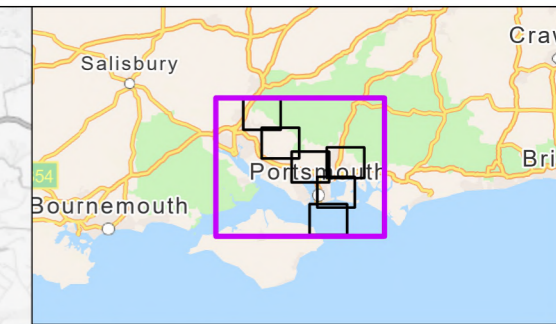
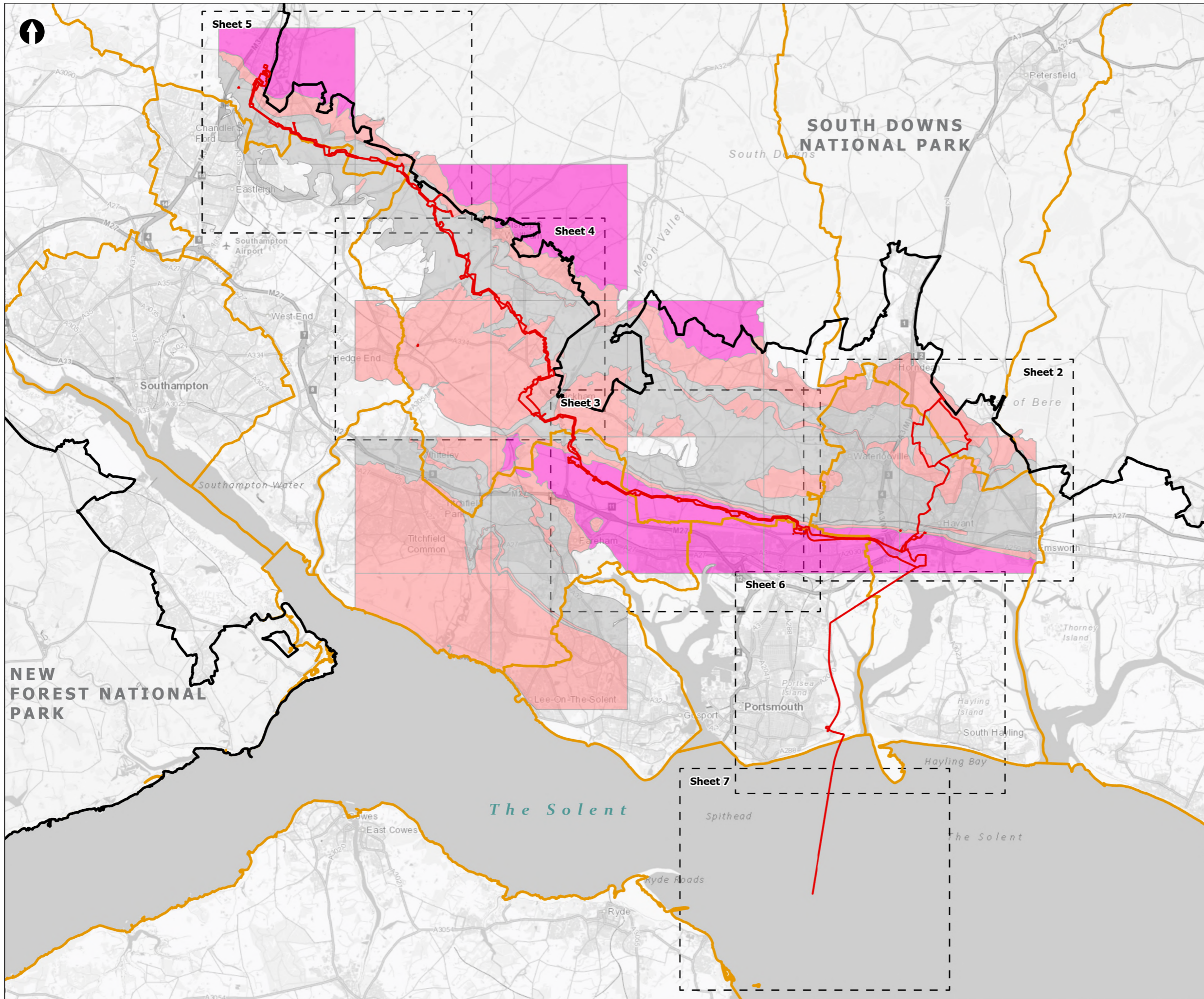
APFP REGULATION: 5(2)(a)

May 2026

Version 0



from
**Southern
Water** 



- Order Limits
- Sheet Extent Boxes 1:30K
- National Parks
- Local planning authorities
- *Bedrock Aquifer Designations**
- Principal
- Secondary A
- Unproductive

*Note that the data displayed in the figure is a subset of the data used to inform the assessment, which cannot be freely reproduced.

Coordinate system: British National Grid; Datum: OSGB 1936
 Data sources: © Crown copyright and database rights 2026 Ordnance Survey 0100031673. Contains OS data © Crown Copyright and database right 2020. Sources: Esri, TomTom, Garmin, FAO, NOAA, USGS, © OpenStreetMap contributors, and the GIS User Community

PROJECT TITLE
 Hampshire Water Transfer and Water Recycling Project

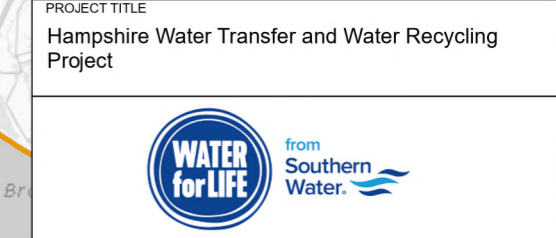
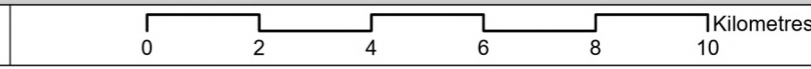
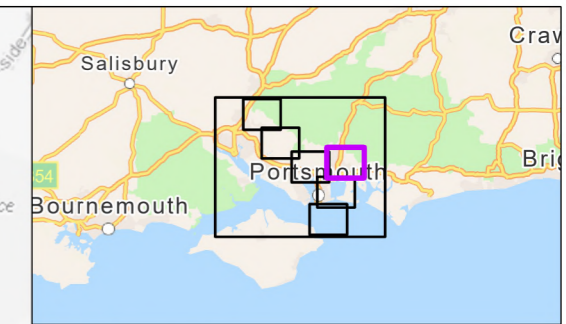
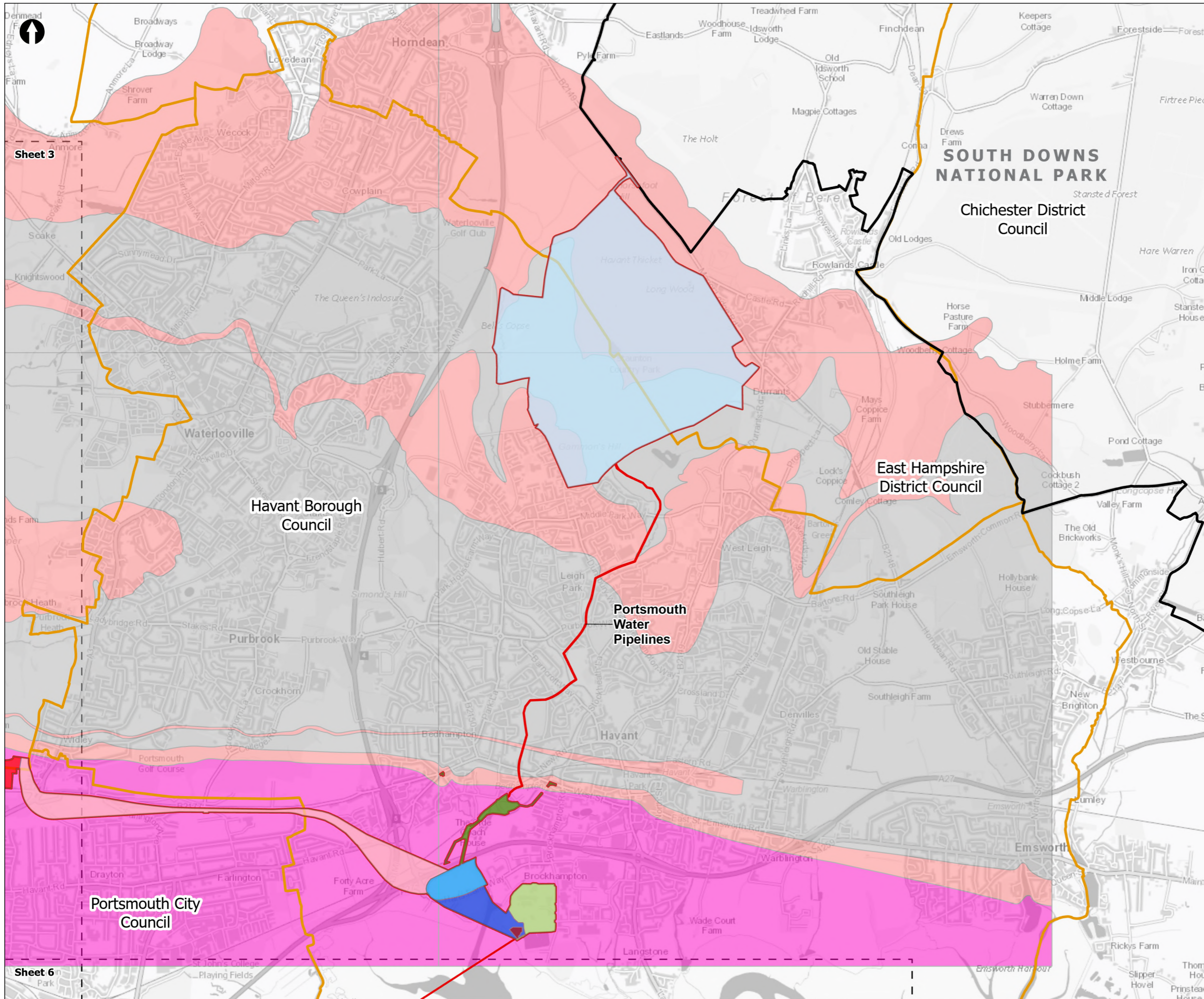


Figure 19.7
 Bedrock Aquifer Designations
 Sheet 1 of 7

Drawn DL	GIS Checked MW	Checked MP	Approved AK
Scale at A3 1:135,000	Status Final	Revision 05	Security STD

Drawing Number
PC5223-RHD-ES-ZZ-D-Z-0087





- Order Limits
- Sheet Extent Boxes 1:30K
- National Parks
- Local planning authorities
- *Bedrock Aquifer Designations**
- Principal
- Secondary A
- Unproductive
- Proposed Development Components**
- Budds Farm Wastewater Treatment Works
- Limits of Deviation for Budds Farm Pumping Station
- Pipelines between the Water Recycling Plant site and Bedhampton Springs
- Water Recycling Plant site
- Pipelines between Budds Farm Wastewater Treatment Works and the Water Recycling Plant site
- Havant Thicket Reservoir
- Pipeline between the Water Recycling Plant site and Otterbourne Water Supply Works**
- Section D: The Water Recycling Plant site to Portsdown Hill
- Section E: Portsdown Hill to Boarhunt

*Note that the data displayed in the figure is a subset of the data used to inform the assessment, which cannot be freely reproduced.

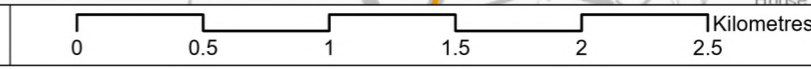
Coordinate system: British National Grid; Datum: OSGB 1936
 Data sources: © Crown copyright and database rights 2026 Ordnance Survey 0100031673. Contains OS data © Crown Copyright and database right 2020, Sources: Esri, TomTom, Garmin, FAO, NOAA, USGS, © OpenStreetMap contributors, and the GIS User Community

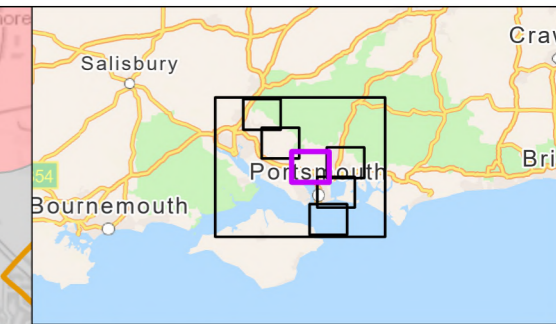
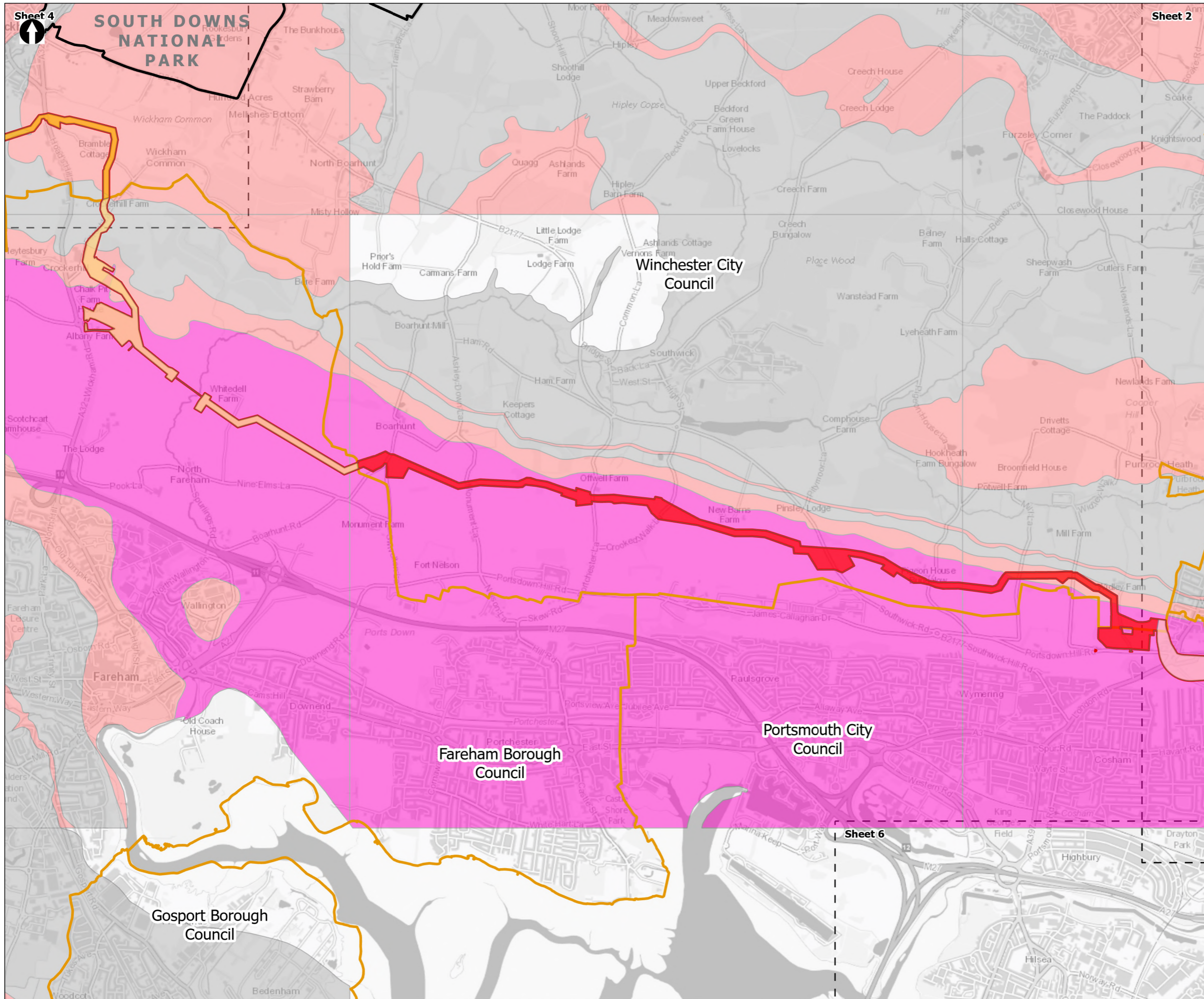
PROJECT TITLE
 Hampshire Water Transfer and Water Recycling Project



Figure 19.7
 Bedrock Aquifer Designations
 Sheet 2 of 7

Drawn DL	GIS Checked MW	Checked MP	Approved AK
Scale at A3 1:30,000	Status Final	Revision 05	Security STD





- Order Limits
- Sheet Extent Boxes 1:30K
- National Parks
- Local planning authorities
- *Bedrock Aquifer Designations**
- Principal
- Secondary A
- Unproductive
- Pipeline between the Water Recycling Plant site and Otterbourne Water Supply Works**
- Section D: The Water Recycling Plant site to Portsdown Hill
- Section E: Portsdown Hill to Boarhunt
- Section F: Boarhunt to Crockerhill
- Section G: Crockerhill to Wickham

*Note that the data displayed in the figure is a subset of the data used to inform the assessment, which cannot be freely reproduced.

Coordinate system: British National Grid; Datum: OSGB 1936
 Data sources: © Crown copyright and database rights 2026 Ordnance Survey 0100031673. Contains OS data © Crown Copyright and database right 2020, Sources: Esri, TomTom, Garmin, FAO, NOAA, USGS, © OpenStreetMap contributors, and the GIS User Community

PROJECT TITLE
 Hampshire Water Transfer and Water Recycling Project

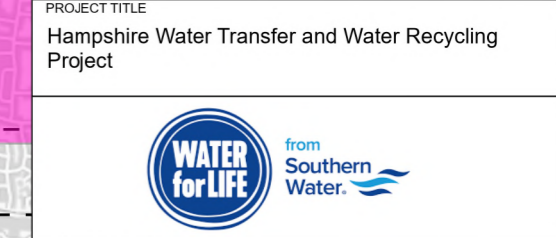
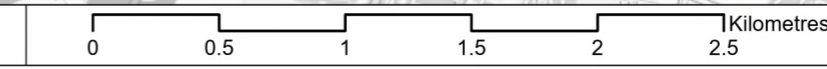
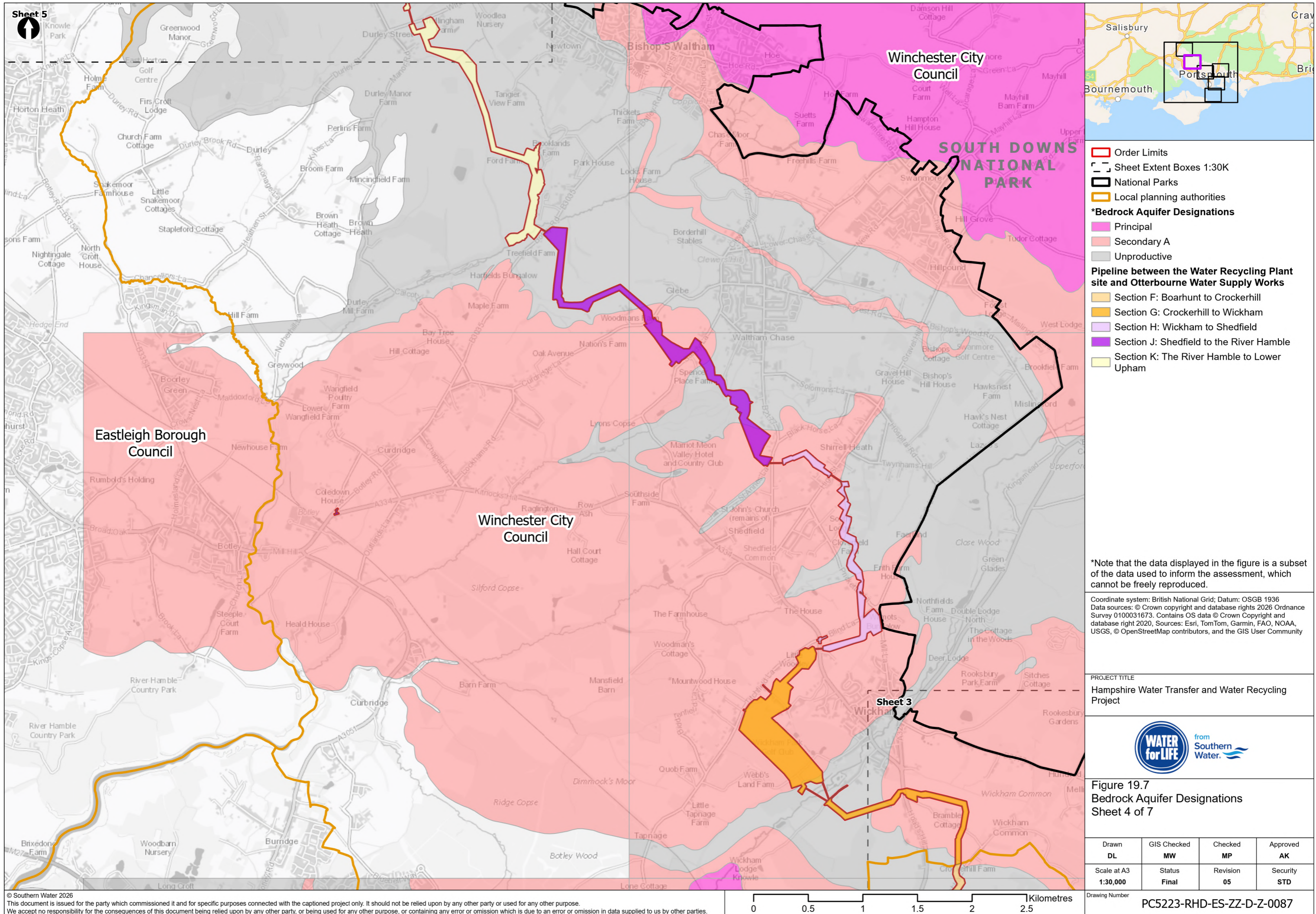


Figure 19.7
 Bedrock Aquifer Designations
 Sheet 3 of 7

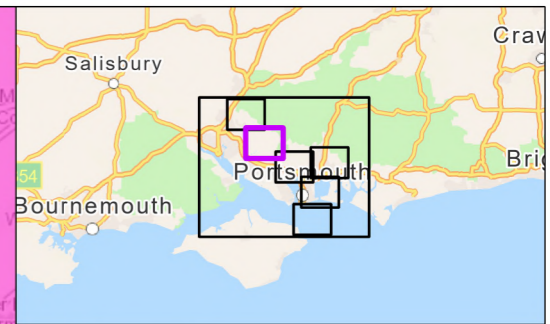
Drawn DL	GIS Checked MW	Checked MP	Approved AK
Scale at A3 1:30,000	Status Final	Revision 05	Security STD

Drawing Number
PC5223-RHD-ES-ZZ-D-Z-0087





Sheet 5



- Order Limits
- Sheet Extent Boxes 1:30K
- National Parks
- Local planning authorities
- *Bedrock Aquifer Designations**
- Principal
- Secondary A
- Unproductive
- Pipeline between the Water Recycling Plant site and Otterbourne Water Supply Works**
- Section F: Boarhunt to Crockerhill
- Section G: Crockerhill to Wickham
- Section H: Wickham to Shedfield
- Section J: Shedfield to the River Hamble
- Section K: The River Hamble to Lower Upham

*Note that the data displayed in the figure is a subset of the data used to inform the assessment, which cannot be freely reproduced.

Coordinate system: British National Grid; Datum: OSGB 1936
 Data sources: © Crown copyright and database rights 2026 Ordnance Survey 0100031673. Contains OS data © Crown Copyright and database right 2020. Sources: Esri, TomTom, Garmin, FAO, NOAA, USGS, © OpenStreetMap contributors, and the GIS User Community

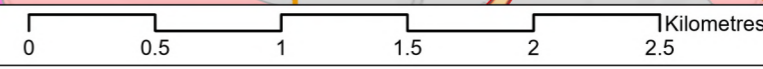
PROJECT TITLE
 Hampshire Water Transfer and Water Recycling Project

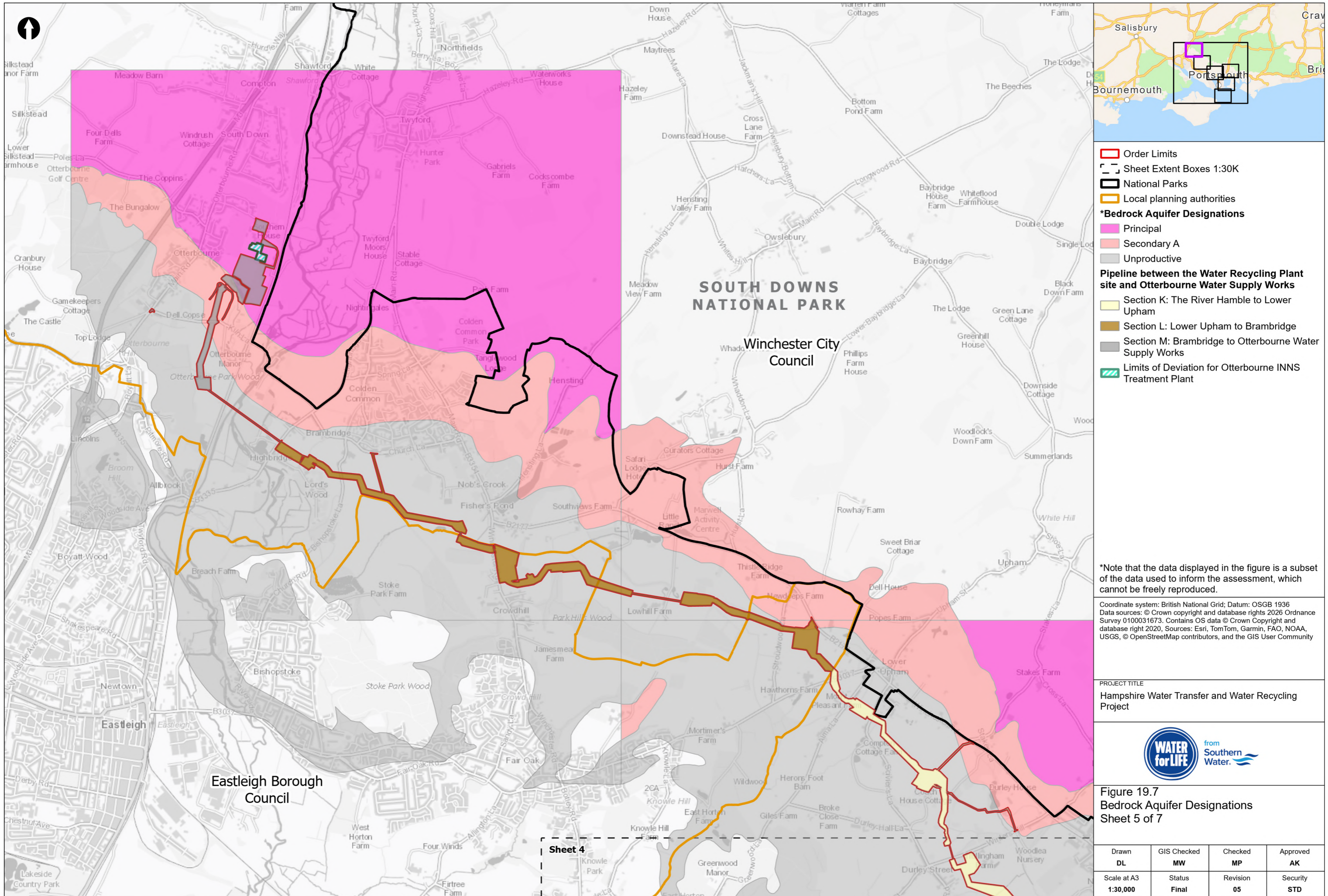


Figure 19.7
 Bedrock Aquifer Designations
 Sheet 4 of 7

Drawn DL	GIS Checked MW	Checked MP	Approved AK
Scale at A3 1:30,000	Status Final	Revision 05	Security STD

Drawing Number
PC5223-RHD-ES-ZZ-D-Z-0087





- Order Limits
- Sheet Extent Boxes 1:30K
- National Parks
- Local planning authorities
- *Bedrock Aquifer Designations**
- Principal
- Secondary A
- Unproductive
- Pipeline between the Water Recycling Plant site and Otterbourne Water Supply Works**
- Section K: The River Hamble to Lower Upham
- Section L: Lower Upham to Brambridge
- Section M: Brambridge to Otterbourne Water Supply Works
- Limits of Deviation for Otterbourne INNS Treatment Plant

*Note that the data displayed in the figure is a subset of the data used to inform the assessment, which cannot be freely reproduced.

Coordinate system: British National Grid; Datum: OSGB 1936
 Data sources: © Crown copyright and database rights 2026 Ordnance Survey 0100031673. Contains OS data © Crown Copyright and database right 2020. Sources: Esri, TomTom, Garmin, FAO, NOAA, USGS, © OpenStreetMap contributors, and the GIS User Community

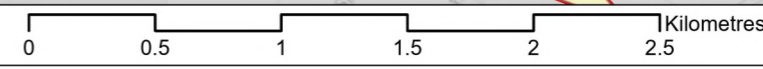
PROJECT TITLE
 Hampshire Water Transfer and Water Recycling Project

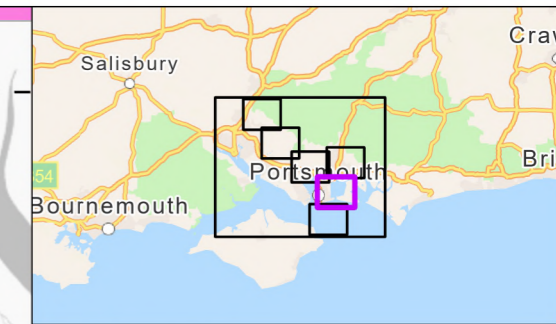
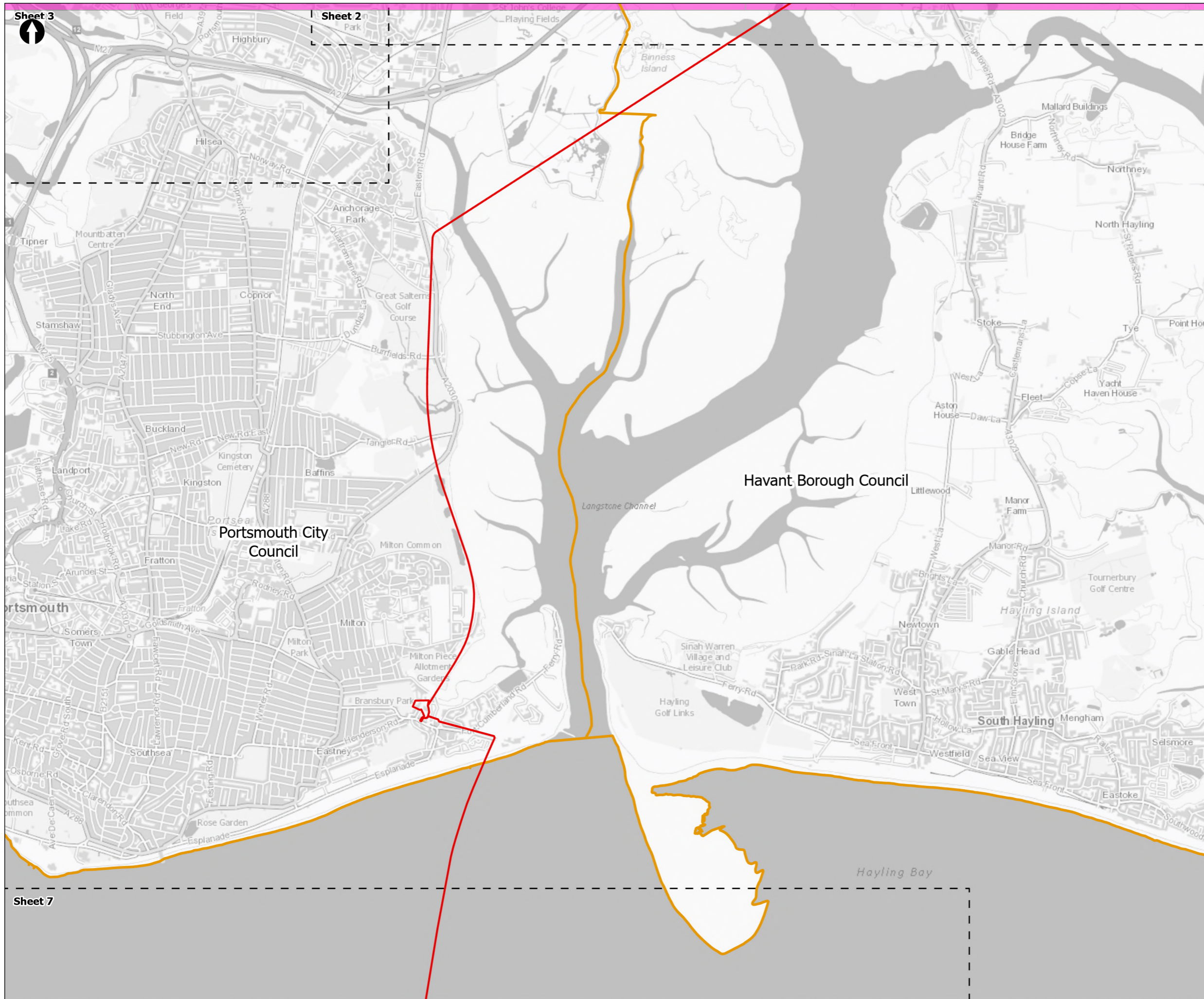


Figure 19.7
 Bedrock Aquifer Designations
 Sheet 5 of 7

Drawn DL	GIS Checked MW	Checked MP	Approved AK
Scale at A3 1:30,000	Status Final	Revision 05	Security STD

Drawing Number
PC5223-RHD-ES-ZZ-D-Z-0087





- Order Limits
- Sheet Extent Boxes 1:30K
- Local planning authorities
- *Bedrock Aquifer Designations**
- Principal

***Note that the data displayed in the figure is a subset of the data used to inform the assessment, which cannot be freely reproduced.**

Coordinate system: British National Grid; Datum: OSGB 1936
 Data sources: © Crown copyright and database rights 2026 Ordnance Survey 0100031673. Contains OS data © Crown Copyright and database right 2020. Sources: Esri, TomTom, Garmin, FAO, NOAA, USGS, © OpenStreetMap contributors, and the GIS User Community

PROJECT TITLE
 Hampshire Water Transfer and Water Recycling Project

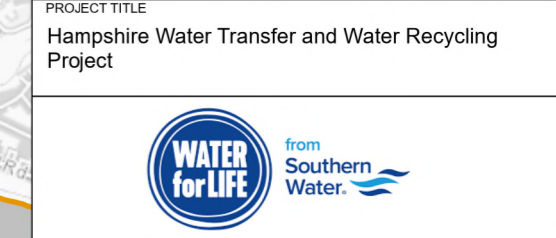
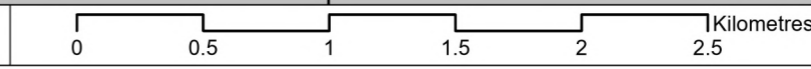


Figure 19.7
 Bedrock Aquifer Designations
 Sheet 6 of 7

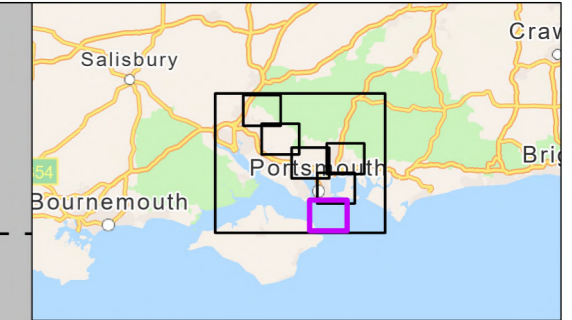
Drawn DL	GIS Checked MW	Checked MP	Approved AK
Scale at A3 1:30,000	Status Final	Revision 05	Security STD

Drawing Number
PC5223-RHD-ES-ZZ-D-Z-0087





Sheet 6



- Order Limits
- Sheet Extent Boxes 1:30K
- Local planning authorities

Spithead

*Note that the data displayed in the figure is a subset of the data used to inform the assessment, which cannot be freely reproduced.

Coordinate system: British National Grid; Datum: OSGB 1936
Data sources: © Crown copyright and database rights 2026 Ordnance Survey 0100031673. Contains OS data © Crown Copyright and database right 2020, Sources: Esri, TomTom, Garmin, FAO, NOAA, USGS, © OpenStreetMap contributors, and the GIS User Community

PROJECT TITLE
Hampshire Water Transfer and Water Recycling Project



Figure 19.7
Bedrock Aquifer Designations
Sheet 7 of 7

Drawn DL	GIS Checked MW	Checked MP	Approved AK
Scale at A3 1:30,000	Status Final	Revision 05	Security STD

Drawing Number
PC5223-RHD-ES-ZZ-D-Z-0087



Isle of Wight Council

